

Area / Capacity Details

Category	Area (Sq Mts)	Capacity (tons)	Temperature range (Degrees Celsius)
----------	---------------	-----------------	-------------------------------------

Non – Bonded Area

Truck Dock	120	-	+15 to +25
Customs Inspection Area	736	20 - 32	+15 to +25
Racking System (In examination area)	50	38 - 60	+15 to +25
Cold Storage (250 cu.mt)	50	24 - 34	+2 to +8

Bonded Area

Ambient storage - (For build up ULD's)	342	36 - 54	+15 to +25
Cold Storage - (For build up ULD's)	102	12 - 20	+2 to +8
Total	1400	130 - 200	

Pharmaceutical Export Trend at Hyderabad (figures in tons)

Category	Y 2009	Y 2010	% Growth
Total Exports	25501	29857	17%
Total Pharmaceutical Exports	16500	20922	27%
% of Pharmaceuticals in total Exports	65%	70%	
Temperature controlled Pharmaceuticals	-	3077	-
% of Temperature controlled Pharmaceuticals in total Pharmaceuticals Exports	-	15%	-

Services offered at HMA CPL Pharma Zone

1. Acceptance of Export and Transit pharmaceutical cargo under temperature control
2. Temperature recording of the accepted cargo brought under cargo trucks
3. Facilitation of customs examination under temperature control
4. Quality cold chain management
5. Temperature Recording round the clock
6. Facilitation of temperature data to the customers up on request
7. Temperature tracking and monitoring
8. Security surveillance round the clock
9. Screening
10. Unitization of cargo in ULD's
11. Temperature controlled storage for build up ULD's
12. ULD weighment
13. Risk Assessment
14. Documentation

Hyderabad Menzies Air Cargo Pvt. Ltd.

Cargo Terminal, RGI Airport, Shamshabad - 500 409

Tel: +91 40 6697 7043

Fax: +91 40 6697 7050

Email: hyd.commercial@hyderabadmenzies.com

hyd.dutymanager@hyderabadmenzies.com

Website: www.hyderabadmenzies.com

PHARMA BUILDS INDIA



Menzies AVIATION **Hyderabad Menzies Air Cargo Pvt. Ltd.**



Material Handling Equipment

- Dedicated X-ray machines – 02 units (1200 Kgs, 200 Kgs)
- Multi Level Racking system which can accommodate 126 Euro skid positions
- Electric Stacker - 01
- Forklift – 01 (Capacity – 03 tons)
- Hand Pallet Trucks – 10 No's
- Floor Level weighing scales – 02 units (Capacity - 02 tons, 03 tons)
- Ball matting system in bonded area which provide 18 pallet storage positions in the +15 to +25 degree chamber and 06 pallet positions in the +2 to +8 degree chamber



X-Ray Machine



Electric Stacker

The Pharma Zone at Hyderabad Menzies Air Cargo Private Limited provides comprehensive temperature controlled handling and storage solutions to pharmaceutical products like medicines, bulk drugs, formulations, raw materials and vaccines with quality and safety at the highest priority.

The HMA CPL Pharma Zone offers dedicated pharmaceutical handling with +15 to +25 and +2 to +8 degree temperature controlled chambers both in the non-bonded and bonded area. The Facility ensures the quality and effective handling of the pharmaceutical products in compliance with the Global & Local regulatory requirements and Good Storage Practices (GSP). HMA CPL Pharma Zone meets all the industry and regulatory requirements in terms of temperature controlled storage and handling. HMA CPL gives complete assurance that your products are safely handled at our terminal under effective cold chain management

The HMA CPL Pharma Zone is the first airport based dedicated temperature controlled pharmaceutical handling facility in the country. Quality Management, Effective handling, Good Storage Practices, Temperature monitoring & Recording and Risk Assessment are some of the key features of the facility.

- Built over an area of 1400 Sq Mts with a one time holding capacity of 200 tons
- Designed to handle Export and Transit pharmaceutical cargo with annual handling capacity of 30000 tons
- Huge area of 736 Sq Mts for customs examination under temperature control of +15 to +25 degrees
- Separate cold storage room in the non-bonded area under temperature control +2 to +8 degrees

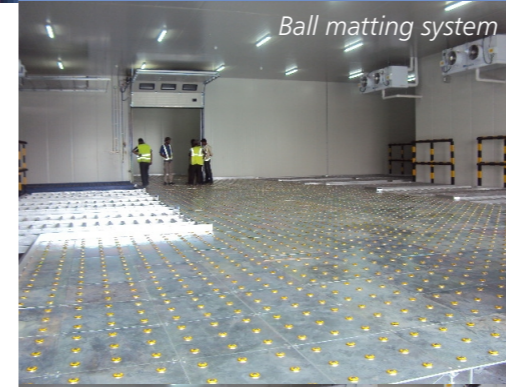
Key Features

Non-Bonded Area

- 05 Dedicated Truck Docks with automated doors and air curtains
- 02 dedicated Dock Levellers
- Spacious customs examination area which can accommodate about 180 skids at a time
- Multi Level Racking system in the examination area with additional 126 slots
- Floor Level Calibrated Weighing Scales
- Cold Storage for +2 to +8 degree products with racking system
- Dedicated X-Ray Machines

Bonded Area

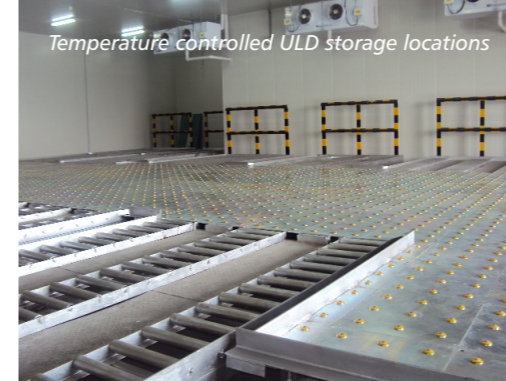
- Storage chamber for build up ULD's under temperature control of +15 to +25 degrees
- Storage chamber for build up ULD's under temperature control of +2 to +8 degrees
- ULD weighment facility



Ball matting system



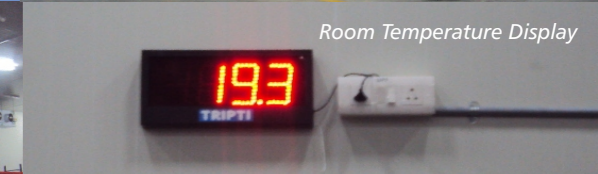
Multi Level Racking System



Temperature controlled ULD storage locations



Cold Storage-Non Bonded Area



Room Temperature Display



Ambient Temperature Display



Truck Docks

Other Key Features

- Handling and storage under Hygienic conditions
- CCTV surveillance in the truck dock, examination area and the bonded area
- Temperature tracking and monitoring with SMS, E-mail and audible alert system to mitigate and identify temperature excursions
- Temperature recording with FDA approved data loggers
- Temperature display in the truck dock, examination area and the bonded area with 12x12 inch display units
- Fire extinguishers through out the facility
- Ball matting floor design in the bonded area for easy movement of build up ULD's and maximum container flexibility
- Specially trained and competent staff to handle pharmaceutical cargo
- Separate areas earmarked for storage of small packages and Dangerous goods
- Calibrated Weighing scales
- Uninterrupted power supply
- Specialized automated material handling equipment for safe and swift operations